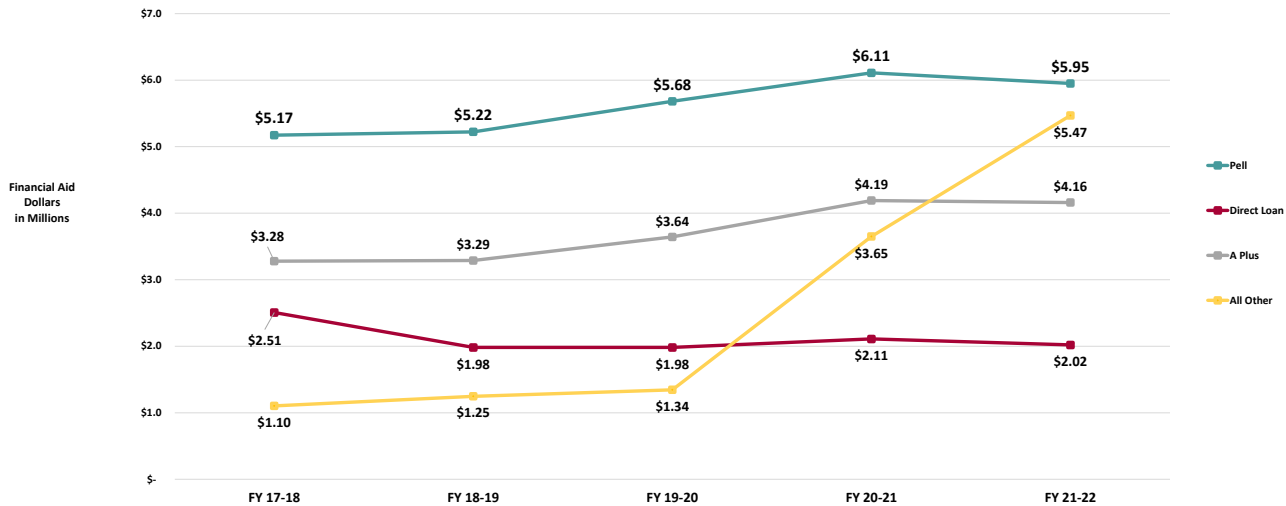


**Section 5: Financial Data**

**Financial Aid Data**

**Graph 5.6: Financial Aid Dollars by Category FY16-17 through FY20-21**



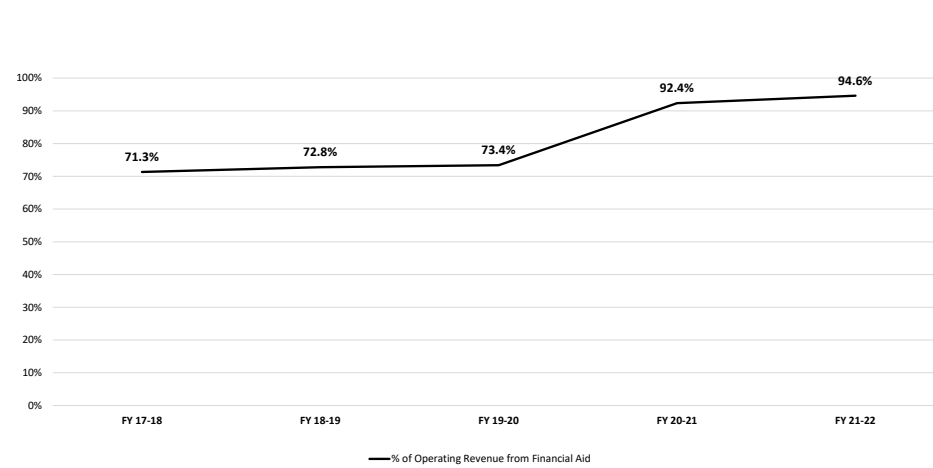
Revenue Categories	FY 17-18	FY 18-19	FY 19-20	FY 20-21	FY 21-22
<b>Total Financial Aid Revenues</b>	<b>\$12.1</b>	<b>\$12.0</b>	<b>\$12.7</b>	<b>\$16.1</b>	<b>\$17.6</b>
Pell (Federal Grants)	\$5.2	\$5.2	\$5.7	\$6.1	\$6.0
% Financial Aid Revenue from Pell	42.9%	43.5%	44.9%	38.0%	33.8%
Direct Loan Program	\$2.5	\$2.2	\$2.0	\$2.1	\$2.0
% Financial Aid Revenue Direct Loan Program	20.8%	18.7%	15.7%	13.1%	11.5%
A-Plus (Missouri Grant)	\$3.3	\$3.3	\$3.6	\$4.2	\$4.2
% Financial Aid Revenue from A-Plus Program	27.2%	27.4%	28.8%	26.1%	23.6%
All Other	\$1.1	\$1.2	\$1.3	\$3.7	\$5.5
% Financial Aid Revenue from All Other Sources	9.1%	10.4%	10.6%	22.7%	31.1%
<b>Total SCC Operating Revenues</b>	<b>\$16.9</b>	<b>\$16.5</b>	<b>\$17.2</b>	<b>\$17.4</b>	<b>\$18.6</b>
Financial Aid % of Total Operating Revenues	71.3%	72.8%	73.4%	92.4%	94.6%
Unduplicated HC of Students Receiving Fin. Aid	3,472	3,410	3,417	3,684	3,539
% of Students Receiving Some Fin. Aid for the AY	37.1%	37.8%	37.7%	42.6%	43.0%
% of Full-Time Students Receiving a Pell Grant Award	25.6%	26.3%	27.7%	29.6%	29.5%

Graph 5.6 shows that financial aid dollars from Pell Grants have remained the largest financial aid revenue source for SCC and has remained a steady amount for the past three years.

The large increase in "All Other" financial aid funds can be attributed to CARES funds being allocated to support students.

The percentage of Full-Time Students Receiving a Pell Grant Award looks at the number of students who were full-time at some point in the year and received a Pell Grant. Since 2017-2018, the percentage of full-time students receiving a Pell Award has increased.

**Graph 5.7: Percent of SCC's Total Operating Revenues from Financial Aid 17-18 through 21-22**



Graph 5.7 shows that the percentage of total operating revenue from financial aid has increased over the last 5 years.